

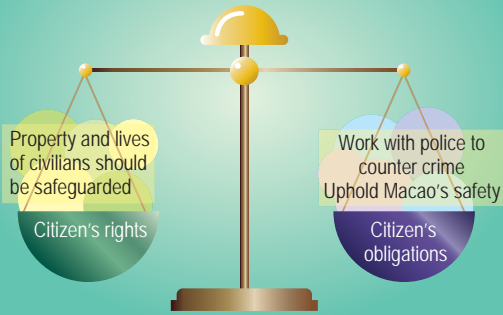


# 司法警察局

## POLÍCIA JUDICIÁRIA

### JUDICIARY POLICE

Remember: Your rights and obligations as a citizen



Report a crime when you see it.  
Work with us in our investigations.  
Your initiative can help maintain Macao's stability.

Please bear in mind your obligations as a citizen and remind your friends of them.

#### Case Reporting and Emergency Operation Centre

Add.: No. 823, Avenida da Amizade, Macau (Headquarters)  
Estrada Flor de Lótus, COTAI (COTAI Sub-bureau)

Tel: 2855 7777

Fax: 2835 6100

Email: [piquete.sede@pj.gov.mo](mailto:piquete.sede@pj.gov.mo)

<http://www.pj.gov.mo>

Crime Report **993**



## Understanding the crime reporting procedures

*Keep Macao safe*

*We all have a part to play*

993



When witnessing or encountering crime, you may wonder:

Whether it is the right way to report crime

What the follow-ups are after filing crime reports

How you should cooperate in their criminal investigations

This leaflet is going to guide you through the procedures of Judiciary Police's crime report and criminal investigation.



Should you wish to find out more, please refer to our "Understanding the crime reporting procedures" pamphlet or relevant regulations.

Procedures that members of the public play a part in

Procedures of the Judiciary Police



When encountering/witnessing crime

Call our crime report hotline or Report to us in person



Our duty officer will record a simple statement from the victim/witness. (ID and contact details are required)

**Emergency**  
(e.g. Arson or murder, etc)

Officers of the Judiciary Police will attend the crime scene immediately to collect evidence.

N.B.: Avoid tampering with the crime scene. Adopt appropriate measures to preserve evidence when necessary.

**Not an emergency**  
(Situations where immediate retrieval of evidence or urgent assistance is not required)

Duty officers will transfer your case to one of our specialised investigation units for follow-ups.

N.B.: If you are a victim of a semi-public or a private offence, you must report the case to the police personally, and state your wish to prosecute the offender criminally for the initiation of police investigation.

Our criminal investigation unit will inform the victim in writing that they are on the case and that the Public Prosecutions Office has been notified with the initiation of the case.



When the case has reached one of our specialised investigation units, the victim/witness will be invited back to the Judiciary Police to give a more detailed description of the case for further enquiry.

The Judiciary Police will then commence a probe into the case based on the victim's/witness' statement.



In some cases, the victim/witness may be asked to identify the culprit after his arrest, if it is necessary for the collection of evidence.

Once the investigations of the case are concluded, the Judiciary Police will direct the case to the Public Prosecutions Office. In the meantime, the victim will be informed of that transition through our written notification.



### What may happen next?

When the Public Prosecutions Office has reservation about the sufficiency of evidence or it believes supplementary investigation is needed to clarify new questionable points, the case will be returned to the Judiciary Police for further investigation. The victim/witness of the case may be asked to provide additional information.



Cooperation between the police and the public is vital in every step of criminal proceedings, and mutual support is one of the keys to successfully preventing and tackling crime.